

754 Spindles, fixing material and accessories

Spindles, fixing material and accessories

Overview

Half-spindles

05 0115 | 05 0116
Page 765



05 0117
Page 759



05 0117
Page 763



05 0117
Page 761



Full spindles

05 0118
Page 758



05 0118
Page 760



05 0122 | 05 0123
Page 762



05 0188 | 05 0189
Page 764



Special spindles

05 0525
Page 766



05 0125
Page 768



Fixing material

05 0526
Page 767



05 0526
Page 767



Grub screws and studs

05 0303
Page 769



05 0309
Page 769



05 0313
Page 770



05 0315
Page 770



05 0316
Page 770



Accessories

05 0320
Page 771



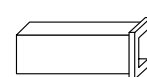
05 0325
Page 771



03 0410
Page 771



05 0425
Page 771



03 0450
Page 771



Note:

FSB supplied the companion screws and spindles in an accessory bag as standard for the following products:

- FSB ASI® sets
- FSB AGL® (FS) sets
- Security fittings
- Backplates with visible fixing
- Flush-fitted roses
- Cut roses and backplates
- Broad backplates/renovation backplates

The screws and rivet nuts are supplied for narrow-stile door fittings. The spindle must be ordered separately. The associated spindles can be found on the following pages.

The individual parts can also be ordered separately for all products that originally come with the accessory bag if there are different door thicknesses or parts need to be reordered. You can also find these parts in the following chapter.

Spindles, fixing material and accessories

Full spindles with groove

05 0118



FSB full spindles
with groove, 8 mm, for female lever handles and knobs
in combination with:

- FSB ASL® sets
- FSB AGL® sets
- Security fittings
- Roses and backplates for narrow-stile doors
- Backplates with visible fixing
- Flush-fitted roses
- Cut roses and backplates
- Broad backplates/renovation backplates

Use scenario: lever handles on both sides

05 0118 00810 5700	8 × 60 mm
05 0118 00812 5700	8 × 65 mm
05 0118 00814 5700	8 × 70 mm
05 0118 00818 5700	8 × 80 mm
05 0118 00822 5700	8 × 90 mm
05 0118 00826 5700	8 × 100 mm
05 0118 00830 5700	8 × 110 mm
05 0118 00832 5700	8 × 115 mm
05 0118 00834 5700	8 × 120 mm
05 0118 00838 5700	8 × 130 mm
05 0118 00840 5700	8 × 135 mm
05 0118 00842 5700	8 × 140 mm
05 0118 00846 5700	8 × 150 mm
05 0118 00848 5700	8 × 155 mm
05 0118 00850 5700	8 × 160 mm
05 0118 00856 5700	8 × 175 mm
05 0118 00866 5700	8 × 200 mm

It is not possible to specify a specific door thickness range.
The spindle should be inserted 25 mm into the adaptor on
each side.

Spindles, fixing material and accessories

Half-spindles with groove

05 0117



FSB half-spindles
with groove, 8 mm, for flush and narrow-stile doors
with M12 threaded plug, for rotatable bearing in neck of
knob, tool size 13 mm

For female lever handles and knobs in combination with:

- FSB ASL® lever/knob sets
- FSB AGL® lever/knob sets
- Security fittings
- Backplates with visible fixing
- Knob backplates with visible fixing

Use scenario: fixed knob/knob backplate on one side,
lever handle on the other

05 0117 00822 5700	8 × 90 mm
05 0117 00826 5700	8 × 100 mm
05 0117 00830 5700	8 × 110 mm
05 0117 00834 5700	8 × 120 mm
05 0117 00838 5700	8 × 130 mm
05 0117 00842 5700	8 × 140 mm
05 0117 00846 5700	8 × 150 mm
05 0117 00850 5700	8 × 160 mm
05 0117 00854 5700	8 × 170 mm

It is not possible to specify a specific door thickness range.

For female lever handles and knobs in combination with:

- Roses and backplates for narrow-stile doors

		Door thickness, symmetrical knob	Door thickness, cranked knob
05 0117 00820 5700	8 × 85 mm	27–31 mm	35–39 mm
05 0117 00822 5700	8 × 90 mm	32–36 mm	40–44 mm
05 0117 00824 5700	8 × 95 mm	37–41 mm	45–49 mm
05 0117 00826 5700	8 × 100 mm	42–46 mm	50–54 mm
05 0117 00828 5700	8 × 105 mm	47–51 mm	55–59 mm
05 0117 00830 5700	8 × 110 mm	52–56 mm	60–64 mm
05 0117 00832 5700	8 × 115 mm	57–61 mm	65–69 mm
05 0117 00834 5700	8 × 120 mm	62–66 mm	70–74 mm
05 0117 00836 5700	8 × 125 mm	67–71 mm	75–79 mm
05 0117 00838 5700	8 × 130 mm	72–76 mm	80–84 mm
05 0117 00840 5700	8 × 135 mm	77–81 mm	85–89 mm
05 0117 00844 5700	8 × 145 mm	82–86 mm	95–99 mm

9b

Spindles, fixing material and accessories

Full spindles with groove, fire safety

05 0118



FSB full spindles
with groove, conforming to DIN 18273 fire safety, 9 mm,
for female lever handles in combination with:

– Narrow-stile door fittings

Use scenario: lever handles on both sides

05 0118 01910 5700	9 × 60 mm
05 0118 01914 5700	9 × 70 mm
05 0118 01918 5700	9 × 80 mm
05 0118 01922 5700	9 × 90 mm
05 0118 01926 5700	9 × 100 mm
05 0118 01930 5700	9 × 110 mm
05 0118 01934 5700	9 × 120 mm
05 0118 01938 5700	9 × 130 mm
05 0118 01942 5700	9 × 140 mm
05 0118 01946 5700	9 × 150 mm
05 0118 01950 5700	9 × 160 mm
05 0118 01954 5700	9 × 170 mm
05 0118 01962 5700	9 × 190 mm

It is not possible to specify a specific door thickness range.
The spindle should be inserted 25 mm into the adaptor on
each side.

These square spindles must only be used in combination
with tested FSB FS lever handles for narrow-stile doors.

Spindles, fixing material and accessories

Half-spindles with groove, fire safety

05 0117

FSB half-spindles with groove, pursuant to DIN 18273 fire safety, 9 mm, with M12 threaded plug, for rotatable bearing in neck of knob, tool size 13 mm, for female lever handles in combination with:

– Narrow-stile door fittings, FS

Use scenario: fixed knob on one side, lever handle for narrow-stile door on the other



		Door thickness, symmetrical knob knob	Door thickness, cranked
05 0117 01918 5700	9 × 80 mm	22–26mm	30–34mm
05 0117 01920 5700	9 × 85 mm	27–31mm	35–39mm
05 0117 01922 5700	9 × 90 mm	32–36mm	40–44mm
05 0117 01924 5700	9 × 95 mm	37–41mm	45–49mm
05 0117 01926 5700	9 × 100 mm	42–46mm	50–54mm
05 0117 01928 5700	9 × 105 mm	47–51mm	55–59mm
05 0117 01930 5700	9 × 110 mm	52–56mm	60–64mm
05 0117 01932 5700	9 × 115 mm	57–61mm	65–69mm
05 0117 01934 5700	9 × 120 mm	62–66mm	70–74mm
05 0117 01936 5700	9 × 125 mm	67–71mm	75–79mm
05 0117 01938 5700	9 × 130 mm	72–76mm	80–84mm
05 0117 01940 5700	9 × 135 mm	77–81mm	85–89mm
05 0117 01944 5700	9 × 145 mm	82–86mm	95–99mm

These square spindles must only be used in combination with tested FSB fittings for narrow-stile doors.

Spindles, fixing material and accessories

Full spindles with groove, stepped on both sides

05 0122 | 05 0123



FSB full spindles
with groove, stepped on both sides, for female lever
handles in combination with:

- FSB ASL® sets
- Narrow-stile door fittings

Use scenario: lever handles on both sides

Further application areas are possible where a stepped
spindle is required.

05 0122 01026 5700	8/10/8 × 100 mm
05 0122 01030 5700	8/10/8 × 110 mm
05 0122 01034 5700	8/10/8 × 120 mm
05 0122 01038 5700	8/10/8 × 130 mm
05 0122 01042 5700	8/10/8 × 140 mm
05 0122 01046 5700	8/10/8 × 150 mm
05 0122 01050 5700	8/10/8 × 160 mm
05 0122 01054 5700	8/10/8 × 170 mm

05 0123 08524 5700	8/8.5/8 × 95 mm (AT)
05 0123 08530 5700	8/8.5/8 × 110 mm (AT)
05 0123 08534 5700	8/8.5/8 × 120 mm (AT)
05 0123 08538 5700	8/8.5/8 × 130 mm (AT)
05 0123 08542 5700	8/8.5/8 × 140 mm (AT)
05 0123 08546 5700	8/8.5/8 × 150 mm (AT)
05 0123 08550 5700	8/8.5/8 × 160 mm (AT)
05 0123 08554 5700	8/8.5/8 × 170 mm (AT)

Spindles, fixing material and accessories

Half-spindles with groove, stepped

05 0117



FSB half-spindles for flush doors with groove, stepped, 8 mm spindle / 10 mm lock follower, with M12 threaded plug, for rotatable bearing in neck of knob, tool size 13 mm, for female lever handles and knobs in combination with:

- FSB ASL® lever/knob sets
- FSB AGL® lever/knob sets
- Security fittings
- Backplates with visible fixing
- Knob backplates with visible fixing

Use scenario: fixed knob/knob backplate on one side, lever handle on the other

05 0117 01020 5700	8/10 × 85 mm
05 0117 01024 5700	8/10 × 95 mm
05 0117 01028 5700	8/10 × 105 mm
05 0117 01032 5700	8/10 × 115 mm
05 0117 01036 5700	8/10 × 125 mm
05 0117 01040 5700	8/10 × 135 mm
05 0117 01044 5700	8/10 × 145 mm

05 0120 08520 5700	8/8.5 × 85 mm (AT)
05 0120 08524 5700	8/8.5 × 95 mm (AT)
05 0120 08528 5700	8/8.5 × 105 mm (AT)
05 0120 08532 5700	8/8.5 × 115 mm (AT)
05 0120 08536 5700	8/8.5 × 125 mm (AT)
05 0120 08540 5700	8/8.5 × 135 mm (AT)
05 0120 08544 5700	8/8.5 × 145 mm (AT)

It is not possible to specify a specific door thickness range.

Spindles, fixing material and accessories

Full spindles for narrow-stile door fittings, stepped on one side

05 0188 | 05 0189

FSB full spindles stepped on one side, for female lever handles in combination with:

– Narrow-stile door fittings, not FS

Use scenario: lever handle on one side



05 0188 00910	9/8 × 60 mm
05 0188 00916	9/8 × 75 mm
05 0188 00934	9/8 × 120 mm

05 0189 01010	10/8 × 60 mm
05 0189 01016	10/8 × 75 mm
05 0189 01018	10/8 × 80 mm
05 0189 01026	10/8 × 100 mm
05 0189 01030	10/8 × 110 mm

Spindles, fixing material and accessories

Half-spindles for flush doors

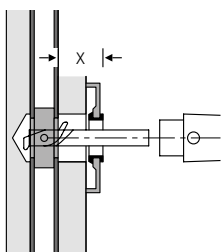
05 0115 | 05 0116



FSB half-spindles for doors with bolt through-fixing, not suitable for locks with self-tightening follower, for female lever handles and knobs in combination with:

- FSB ASL® sets
- FSB AGL® sets
- Security fittings
- Backplates with visible fixing
- Cut roses and backplates
- Broad backplates/renovation backplates

		Cavity dimension (X)
05 0115 00710	7 × 60 mm	20–24 mm
05 0115 00714	7 × 70 mm	30–34 mm
05 0115 00810	8 × 60 mm	20–24 mm
05 0115 00812	8 × 65 mm	25–29 mm
05 0115 00814	8 × 70 mm	30–34 mm
05 0115 00816	8 × 75 mm	35–39 mm
05 0115 00818	8 × 80 mm	40–44 mm
05 0115 01010	10 × 60 mm	20–24 mm
05 0115 01012	10 × 65 mm	25–29 mm
05 0115 01014	10 × 70 mm	30–34 mm
05 0115 01016	10 × 75 mm	35–39 mm
05 0115 01018	10 × 80 mm	40–44 mm
05 0115 01022	10 × 90 mm	50–54 mm
05 0115 01026	10 × 100 mm	60–64 mm
05 0116 01012	8/10 × 65 mm	25–29 mm*
05 0116 01014	8/10 × 70 mm	30–34 mm*
05 0116 01016	8/10 × 75 mm	35–39 mm*
05 0116 01018	8/10 × 80 mm	40–44 mm*
05 0116 01022	8/10 × 90 mm	50–54 mm*
05 0116 01026	8/10 × 100 mm	60–64 mm*



* stepped, 8 mm handle perforation / 10 mm lock follower

9b

Base your selection of the right FSB half-spindle on the cavity dimension (X). The cavity dimension (X) is the distance from the top edge of the backplate or rose shank to the top edge of the lock follower.

Spindles, fixing material and accessories

Special spindles for narrow-stile door fittings

05 0525

FSB square spindles for connecting narrow-stile door fittings, 8 and 9 mm special spindles for narrow-stile doors, suitable for connecting two lever handles for narrow-stile doors (cranked/ cranked, cranked/in-line, in-line/in-line) using cup-point grub screws

Female-handle side



05 0525 028(9)..

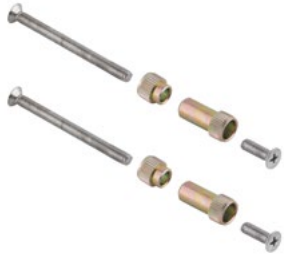
Male-handle side

Accessory bag	Spindle length	Door thickness
8 mm		
05 0525 02804	96 mm	35– 44 mm
05 0525 02805	106 mm	45– 54 mm
05 0525 02806	116 mm	55– 64 mm
05 0525 02807	126 mm	65– 74 mm
05 0525 02808	136 mm	75– 84 mm
05 0525 02809	146 mm	85– 94 mm
05 0525 02810	156 mm	95– 104 mm
9 mm		
05 0525 02904	93 mm	35– 44 mm
05 0525 02905	103 mm	45– 54 mm
05 0525 02906	113 mm	55– 64 mm
05 0525 02907	123 mm	65– 74 mm
05 0525 02908	133 mm	75– 84 mm
05 0525 02909	143 mm	85– 94 mm
05 0525 02910	153 mm	95– 104 mm

Spindles, fixing material and accessories

Fixing material for narrow-stile door fittings

05 0526



Fixing set for narrow-stile door fittings with through-fixing to SSF locks for narrow-stile doors (series 01 and 02)

Associated spindle:
05 0525 028.. (8 mm) or
05 0525 029.. (9 mm)
See page 766

Includes screws, metal stabiliser lugs (additionally fixed on one side with M5 screw)

Accessory bag

Screw length

Door thickness

05 0526 01045

50 mm

45 – 49 mm

05 0526 01050

55 mm

50 – 54 mm

05 0526 01055

60 mm

55 – 59 mm

05 0526 01060

65 mm

60 – 64 mm

05 0526 01065

70 mm

65 – 69 mm

05 0526 01070

75 mm

70 – 74 mm

05 0526 01075

80 mm

75 – 79 mm

05 0526 01080

85 mm

80 – 84 mm

05 0526 01085

90 mm

85 – 89 mm

05 0526 01090

95 mm

90 – 94 mm

05 0526 01095

100 mm

95 – 99 mm

05 0526 01000

105 mm

100 – 104 mm

05 0526



Fixing material for narrow-stile door fittings

Screws M5 × 25 mm and rivet nuts

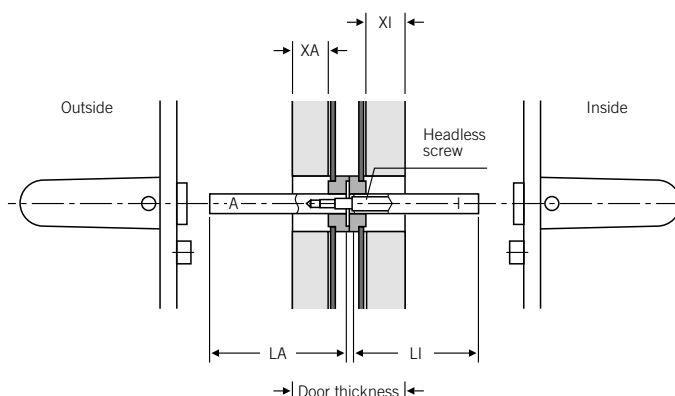
Spindles, fixing material and accessories

Special spindle for FSB AGL® FS EN 179 sets

05 0125



FSB special spindle
pursuant to DIN 18273 fire safety,
for locks with split follower



The FSB special spindle (9 mm), which has been tested and approved under DIN 18273 and is assigned product code 05 0125, is available for locks with a split follower and can accommodate door thicknesses of 34 – 101 mm assuming the lock is positioned centrally.

Please provide the following details when ordering:

- Door thickness
- Dimensions XA and XI
- Product code of the FSB set used to determine the correct spindle length

For further information on using FSB fittings on emergency exit devices pursuant to EN 179, please consult the relevant FSB declaration of performance. It is important when using the FSB special spindle for locks with a split follower not only to heed building regulations but also to bear in mind that panic fittings (lock, cylinder, spindle, handles, etc.) are intended solely for use in an emergency and must not be fitted to doors in constant operation.

DIN 18273 additionally states that it is inadmissible to piece together fire safety sets out of random combinations of parts by any one manufacturer or to mix components of fire safety and smoke control sets from more than one manufacturer.

FSB advises heeding the statements and recommendations made by the lock and fittings industries in this respect. Building-authority approval of FSB special spindle 05 0125 for locks with a split follower applies in conjunction with certified FSB fittings.

Installation instructions

1. From the outside of the door, insert the spindle section marked 'A' into the lock follower as far as the coupling washer.
2. From the inside of the door, likewise push the spindle section marked 'I' into the lock follower as far as the coupling washer, and then screw both sections together through the coupling washer using the headless screw.
3. Now slide the lever handles with turnably fixed bearing onto the spindles together with their backplates or roses.
4. Ensure that there is no play when fitting backplates or roses to the door, as even the slightest degree of misalignment can lead to the connection between the two halves of the spindle being ruptured when the handles are operated.
5. Finally, tighten the cup-point grub screws in the levers securely against the spindle on both sides. The heads of the grub screws must be flush with the surface of the lever handle.

Spindles, fixing material and accessories

Screws

05 0303

Cross-recessed oval head
countersunk screw

05 0303 00515 M5 × 15 mm
05 0303 00535 M5 × 35 mm



05 0308

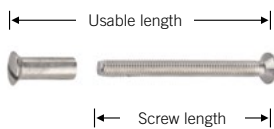
Cross-recessed
countersunk screws

05 0308 00545 M5 × 45 mm
05 0308 00555 M5 × 55 mm
05 0308 00560 M5 × 60 mm
05 0308 00565 M5 × 65 mm
05 0308 00570 M5 × 70 mm
05 0308 00575 M5 × 75 mm
05 0308 00585 M5 × 85 mm
05 0308 00595 M5 × 95 mm
05 0308 00501 M5 × 105 mm

05 0309

Bolts with
M4 threaded sleeve nut

Screw length Usable length Door thickness



05 0309 00435	35 mm	39–44 mm	25–30 mm
05 0309 00440	40 mm	44–49 mm	30–35 mm
05 0309 00445	45 mm	49–54 mm	35–40 mm
05 0309 00450	50 mm	54–59 mm	40–45 mm
05 0309 00455	55 mm	59–64 mm	45–50 mm
05 0309 00460	60 mm	64–69 mm	50–55 mm
05 0309 00465	65 mm	69–74 mm	55–60 mm
05 0309 00470	70 mm	74–79 mm	60–65 mm
05 0309 00475	75 mm	79–84 mm	65–70 mm
05 0309 00480	80 mm	84–89 mm	70–75 mm

Door thickness applies to use of roses and backplates with a height of 7 mm

9b

Spindles, fixing material and accessories

Grub screws and studs

05 0313



Grub screws

05 0313 00670 M6 × 70 mm
05 0313 00680 M6 × 80 mm
05 0313 00690 M6 × 90 mm
05 0313 00600 M6 × 100 mm

05 0313 00840 M8 × 40 mm
05 0313 00850 M8 × 55 mm
05 0313 00860 M8 × 60 mm
05 0313 00870 M8 × 70 mm
05 0313 00880 M8 × 80 mm
05 0313 00800 M8 × 100 mm

05 0315



Cross-recessed countersunk tapping screw

2.9 × 16 mm
3.9 × 16 mm
4.2 × 19 mm

05 0316



Headless wood screws

05 0316 00640
M6 variant:
Overall length 40 mm
Length of M6 threading:
10 mm

05 0316 00840
M8 variant:
Overall length 40 mm
Length of M8 threading:
15 mm

Spindles, fixing material and accessories

Accessories

05 0320



Domed nuts

Aluminium
Stainless steel
05 0320 00800 M8

05 0325



Blind nut
with shank 12 mm

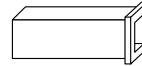
Aluminium
05 0325 00600 M6
05 0325 00800 M8

03 0410



FSB socket key
for half-spindles with plug

05 0425



Adaptor sleeve
for lever handle spindle
and lock follower

05 0425 00809
8 to 9.0 mm

05 0425 00810
8 to 10.0 mm

05 0425 00910
9 to 10.0 mm

05 0425 01885
8 to 8.5 mm

03 0450



Grub screw
M6 x 8 mm DIN 916 Tuflok

03 0450 09230 6001
for door handles in
0105, 0205, 6204, 6205

03 0450 09230 6021
for door handles in
0410, 0510, 0710, 0810,
7615, 7625

9b